



CHINA OPEN

CITY, COUNTRY
Beijing, CHN

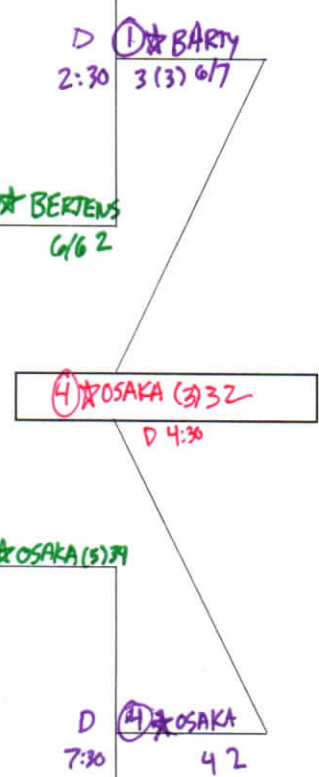
TOURNAMENT DATES
27 Sep - 6 October

SURFACE
Hard

TOTAL FINANCIAL COMMITMENT
\$8,285,274

MAIN DRAW SINGLES

STATUS		NAT			
1	1 BARTY, Ashleigh	AUS	A. BARTY (1) 1		
2	BYE				
3	PUTINTSEVA, Yulia	KAZ	Putintseva 01		
4	QUALIFIER BLINKOVA, Anna	RUS	Zheng (N) 3 6/5	D 4:30	1 BARTY 3 (6/5) 2
5	ZHENG, Saisai	CHN	Zheng 31		
6	PUJIG, Monica	PUR	(13) STEPHENS 53		
7	QUALIFIER LINETTE, Magdalena	POL	(9) BENCIC 52		
8	13 STEPHENS, Sloane	USA	(9) BENCIC (3) 35	D 12:30	1 BARTY (4) 43
9	BENCIC, Belinda	SUI	(9) BENCIC (3) 35		
10	HSIEH, Su-Wei	TPE	(9) VENUS 3 (4) 5		
11	STRYCOVA, Barbora	CZE	Mladenovic 32	L 6:30	7 KVITOVA 33
12	WILLIAMS, Venus	USA	Mladenovic 32		
13	COLLINS, Danielle	USA	P. KVITOVA (7) 1		
14	MLADENOVIC, Kristina	FRA	(3) SVITOLINA		
15	BYE		(3) SVITOLINA		
16	7 KVITOVA, Petra	CZE	(3) SVITOLINA		
17	3 SVITOLINA, Elina	UKR	(3) SVITOLINA		
18	SEVASTOVA, Anastasija	LAT	(3) SVITOLINA		
19	WC WANG, Xinyu	CHN	(3) SVITOLINA		
20	WANG, Yafan	CHN	(3) SVITOLINA		
21	PAVLYUCHENKOVA, Anastasia	RUS	(3) SVITOLINA		
22	KUDERMETOVA, Veronika	RUS	(3) SVITOLINA		
23	MUGURUZA, Garbiñe	ESP	(3) SVITOLINA		
24	15 KENIN, Sofia	USA	(3) SVITOLINA		
25	10 KERBER, Angelique	GER	(3) SVITOLINA		
26	ZHANG, Shuai	CHN	(3) SVITOLINA		
27	HERCOG, Polona	SLO	(3) SVITOLINA		
28	GOERGES, Julia	GER	(3) SVITOLINA		
29	GARCIA, Caroline	FRA	(3) SVITOLINA		
30	YASTREMSKA, Dayana	UKR	(3) SVITOLINA		
31	VEKIC, Donna	CRO	(3) SVITOLINA		
32	8 BERTENS, Kiki	NED	(3) SVITOLINA		
33	5 ANDREESCU, Bianca	CAN	(3) SVITOLINA		
34	SASNOVICH, Aliaksandra	BLR	(3) SVITOLINA		
35	MERTENS, Elise	BEL	(3) SVITOLINA		
36	MARTIC, Petra	CRO	(3) SVITOLINA		
37	QUALIFIER BRADY, Jennifer	USA	(3) SVITOLINA		
38	ANISIMOVA, Amanda	USA	(3) SVITOLINA		
39	MUCHOVA, Karolina	CZE	(3) SVITOLINA		
40	11 KEYS, Madison	USA	(3) SVITOLINA		
41	14 WANG, Qiang	CHN	(3) SVITOLINA		
42	TOMLIJANOVIC, Ajla	AUS	(3) SVITOLINA		
43	RISKE, Alison	USA	(3) SVITOLINA		
44	BYE				
45	TEICHMANN, Jil	SUI	(3) SVITOLINA		
46	QUALIFIER PERKOVIC, Andrea	GER	(3) SVITOLINA		
47	PEGULA, Jessica	USA	(3) SVITOLINA		
48	4 OSAKA, Naomi	JPN	(3) SVITOLINA		
49	6 HALEP, Simona	ROU	(3) SVITOLINA		
50	QUALIFIER PETERSON, Rebecca	SWE	(3) SVITOLINA		
51	ALEXANDROVA, Ekaterina	RUS	(3) SVITOLINA		
52	QUALIFIER PERA, Bernarda	USA	(3) SVITOLINA		
53	KASATKINA, Daria	RUS	(3) SVITOLINA		
54	WC PENG, Shuai	CHN	(3) SVITOLINA		
55	BYE				
56	12 SABALENKA, Aryna	BLR	(3) SVITOLINA		
57	16 WOZNIACKI, Caroline	DEN	(3) SVITOLINA		
58	QUALIFIER DAVIS, Lauren	USA	(3) SVITOLINA		
59	QUALIFIER MCHALE, Christina	USA	(3) SVITOLINA		
60	WC KUZNETSOVA, Svetlana	RUS	(3) SVITOLINA		
61	SINIAKOVA, Katerina	CZE	(3) SVITOLINA		
62	WC WANG, Xiyu	CHN	(3) SVITOLINA		
63	WC OSTAPENKO, Jelena	LAT	(3) SVITOLINA		
64	2 PLISKOVA, Karolina	CZE	(3) SVITOLINA		



SEEDED PLAYERS	RANK	SEEDED PLAYERS	RANK	PRIZE MONEY	POINTS	ALTERNATES / LUCKY LOSERS	RETIREMENTS/WALKOVERS
1 BARTY, Ashleigh	1	9 BENCIC, Belinda	10	10 WINNER	\$1,523,265	1000	
2 PLISKOVA, Karolina	2	11 KERBER, Angelique	12	12 FINALIST	\$762,265	650	
3 SVITOLINA, Elina	3	13 KEYS, Madison	13	13 SEMI-FINALIST	\$371,915	390	
4 OSAKA, Naomi	4	12 SABALENKA, Aryna	14	14 QUARTER-FINALIST	\$178,665	215	
5 ANDREESCU, Bianca	5	13 STEPHENS, Sloane	15	15 THIRD ROUND	\$85,980	120	
6 HALEP, Simona	6	14 WANG, Qiang	16	16 SECOND ROUND	\$41,625	65	
7 KVITOVA, Petra	7	15 KENIN, Sofia	17	17 FIRST ROUND	\$23,915	10	
8 BERTENS, Kiki	8	16 WOZNIACKI, Caroline	18				

LAST DIRECT ACCEPTANCE: Jil Teichmann 59 WTA SUPERVISORS: G.Orlandi/L.Ceccarelli/C.Shu

16 13 3-1 5-1 3-0
12 11 1-0 3-3 2-2

14 3-1 5-3 1-1 9 4-2 3-0 7
7 0-1 2-2 1-1 3 0-1 0-2 0

4 2
0 0